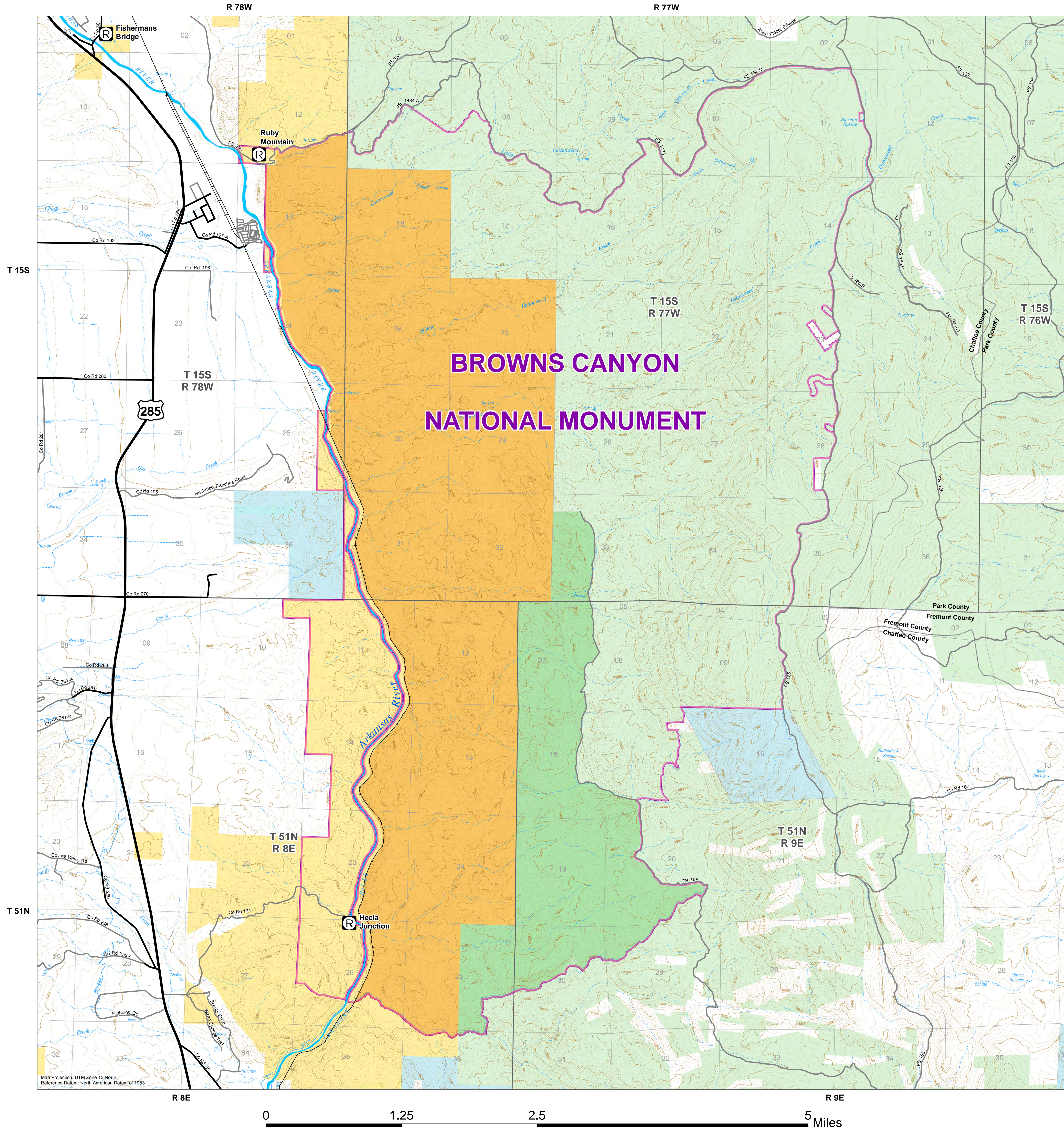


Browns Canyon National Monument and Wilderness

DRAFT - November 5, 2013

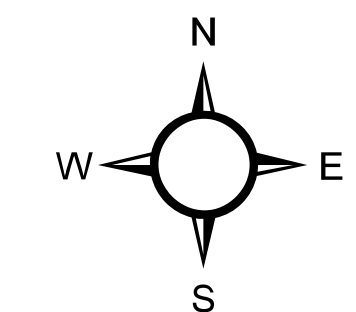
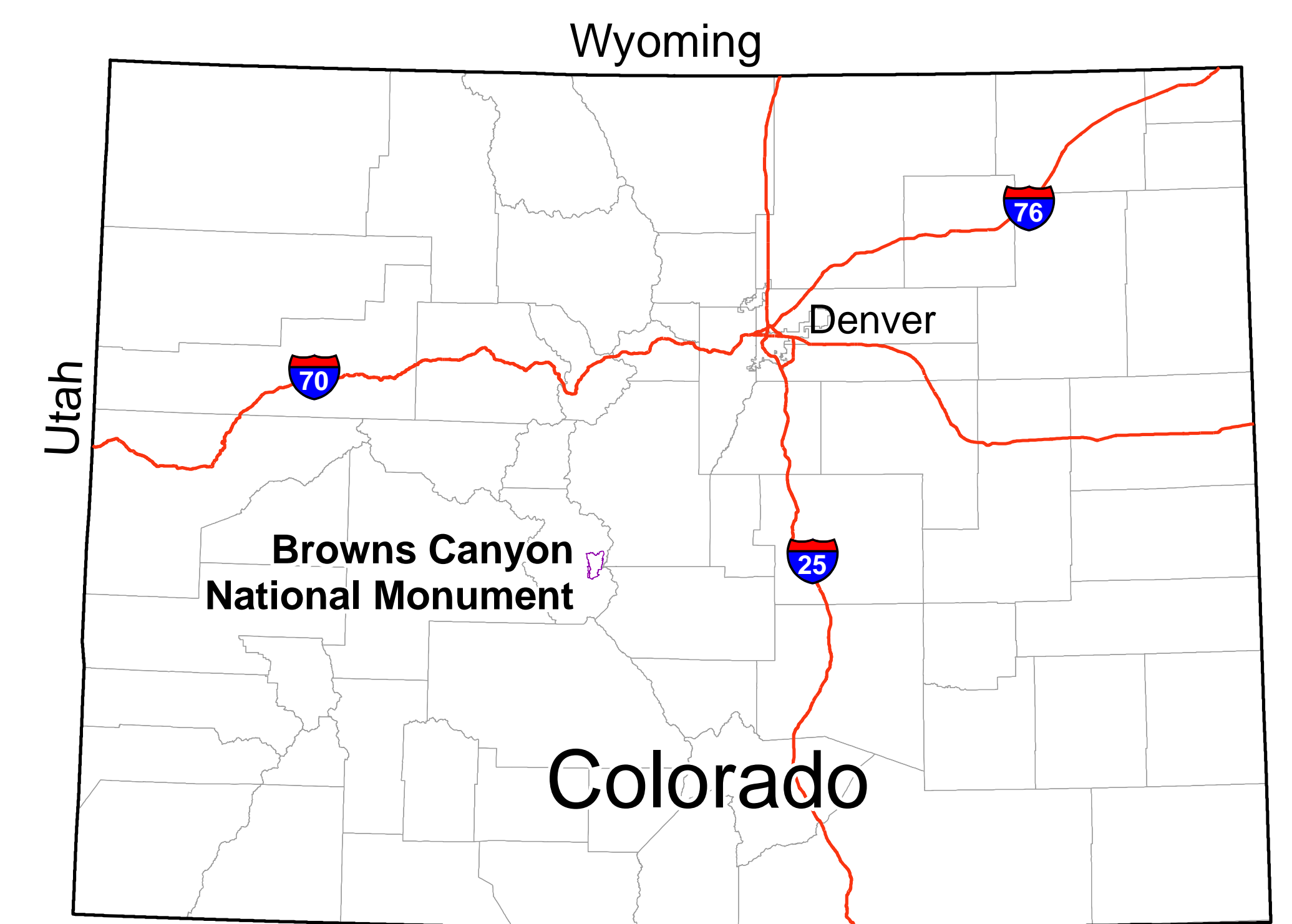
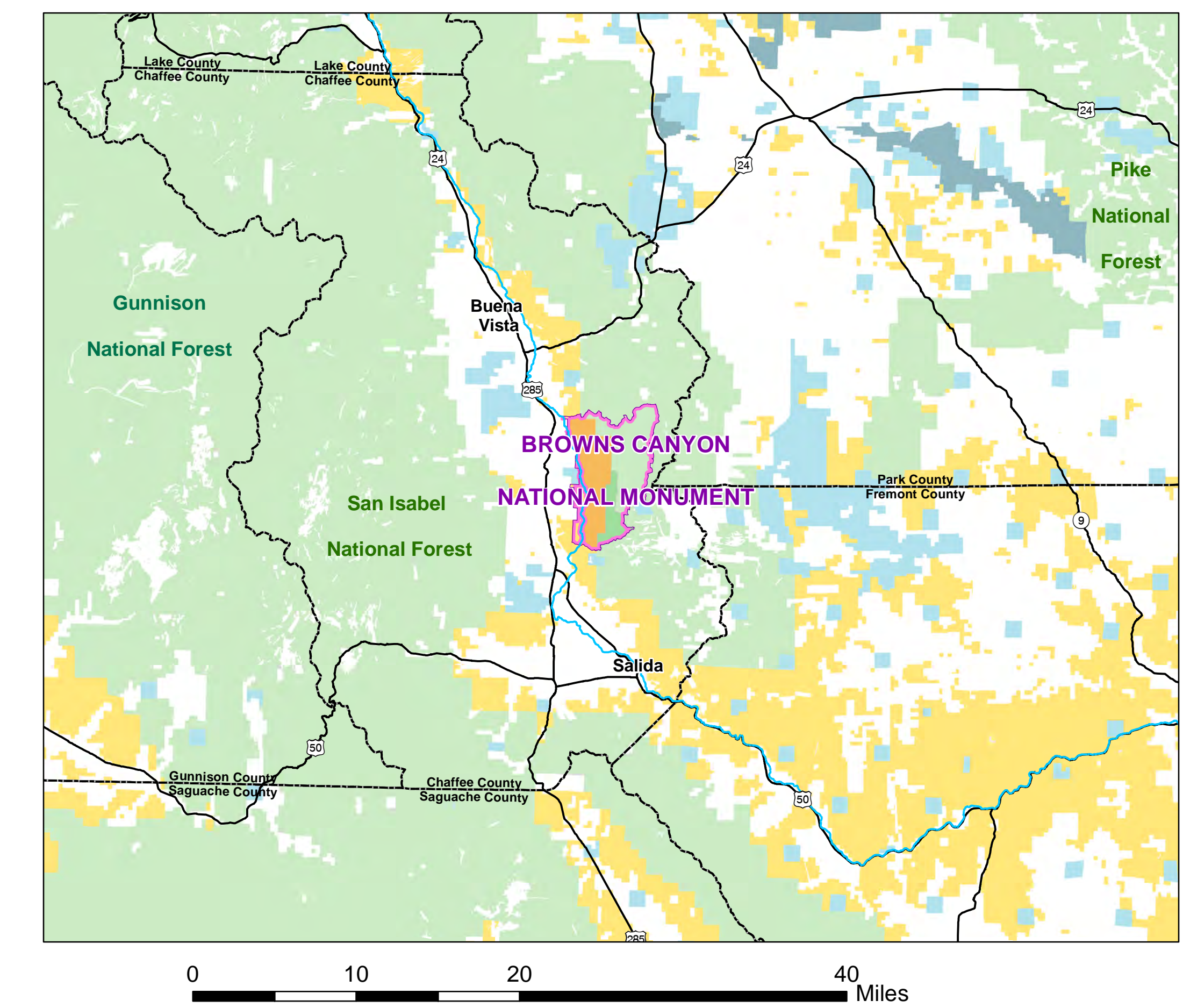
This map prepared at the request of Senator Mark Udall



Legend

- Proposed Browns Canyon NM
- Proposed BLM Wilderness
- Proposed USFS Wilderness
- Bureau of Land Management
- State
- US Forest Service
- Recreation Sites
- Paved Roads
- Unpaved Roads
- Railroad
- County Boundaries

Regional Map



NO WARRANTY IS MADE BY THE BUREAU OF LAND MANAGEMENT FOR USE OF THE DATA FOR PURPOSES NOT INTENDED BY BLM.

This map is intended to be plotted at 34x44

This map was produced by the BLM Royal Gorge Field Office, Nov. 5, 2013
 Document Path: T:\CO\GIS\gwork\gof\shared\Administrative\RGFO_Udall_Browns_Canyon_Maps_Project_Folder\Maps\ArcGIS\Working\Nov2013\3DRAFT_BrownsCanyonNationalMonument_20131105_MapB.mxd