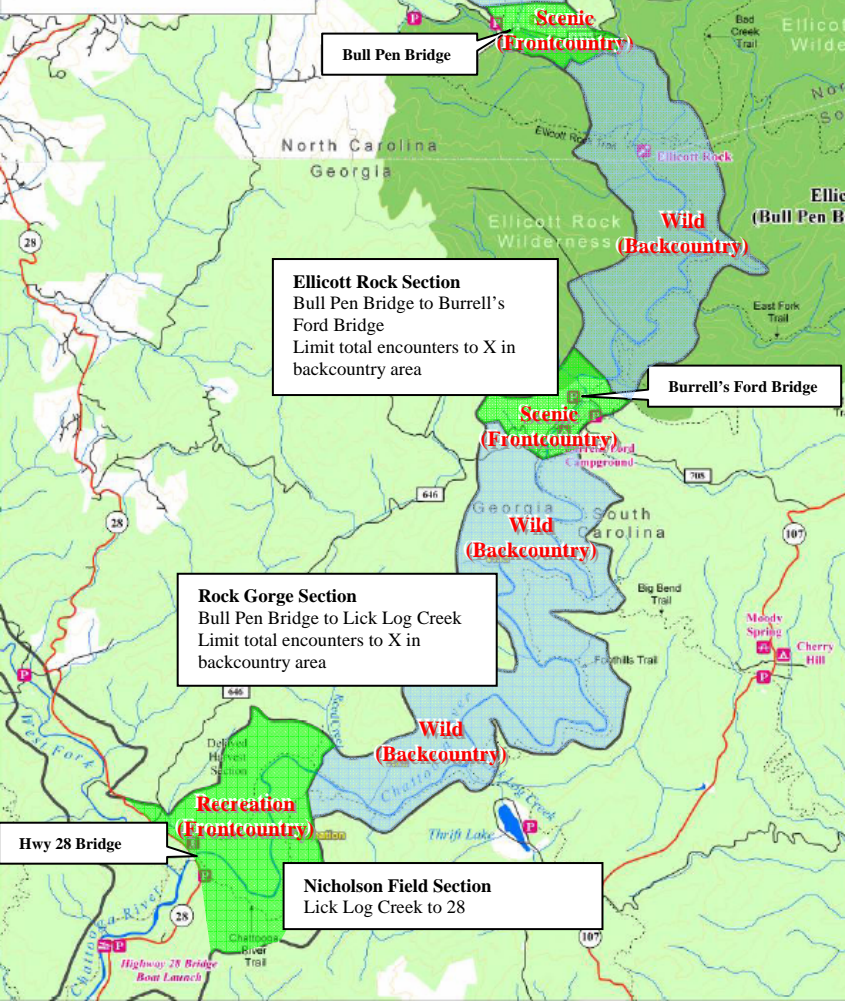
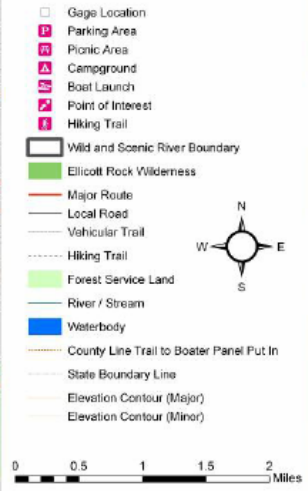


Upper Chattooga River National Wild & Scenic River Corridor



General Protection Standards

Group Size	Limited to 12 regardless of activity.
Recreational Users	Monitor use for biophysical impacts, if significant, implement temporary area closure for restoration
	Reduce use if encounter or visitation standards are exceeded, using indirect measures first, and direct measures if indirect measures fail.
Trails	Designate existing user-created trails except where resource damage can't be mitigated.
	Monitor trails for biophysical impacts, if significant, implement temporary trail closure for restoration
	No new trail construction unless a reroute is necessary to correct existing problems on designated trails.
	No new user-created trails.
Woody Debris	Naturally occurring woody debris remains undisturbed, no placement of woody debris in river or side streams
Campsites: Wilderness and Wild Segments	Designate existing campsites except where resource damage can't be mitigated
	Camping in designated campsites only. Campsite must be listed on User Permit.
	No more than one campsite per ¼ mile of river.
	No new user-created campsites.
Campsites: Recreation and Scenic Segments	Campsites limited to 50 feet from the river, 50 feet from trails, 100 feet from occupied campsites and 300 feet from open public roads.
	Mitigate resource damage at existing campsites.
Parking	No parking lots inside the corridor boundary. Close lots as needed
Use Monitoring	Self registration for all users/visitors (not fees).
	Monitor capacity. The Forest Service shall regularly monitor for capacity and exceedances of capacity standards

Legend:

Recreation = Wild and Scenic Corridor Designation
(Frontcountry) = Proposed Use Designation

Green = Frontcountry Standards

Blue = Backcountry Standards

Visitor Use Capacity Analysis
 Upper Chattooga River
 North Carolina, Georgia,
 and South Carolina



Revised Option 6
 With Protections

Figure 1

