

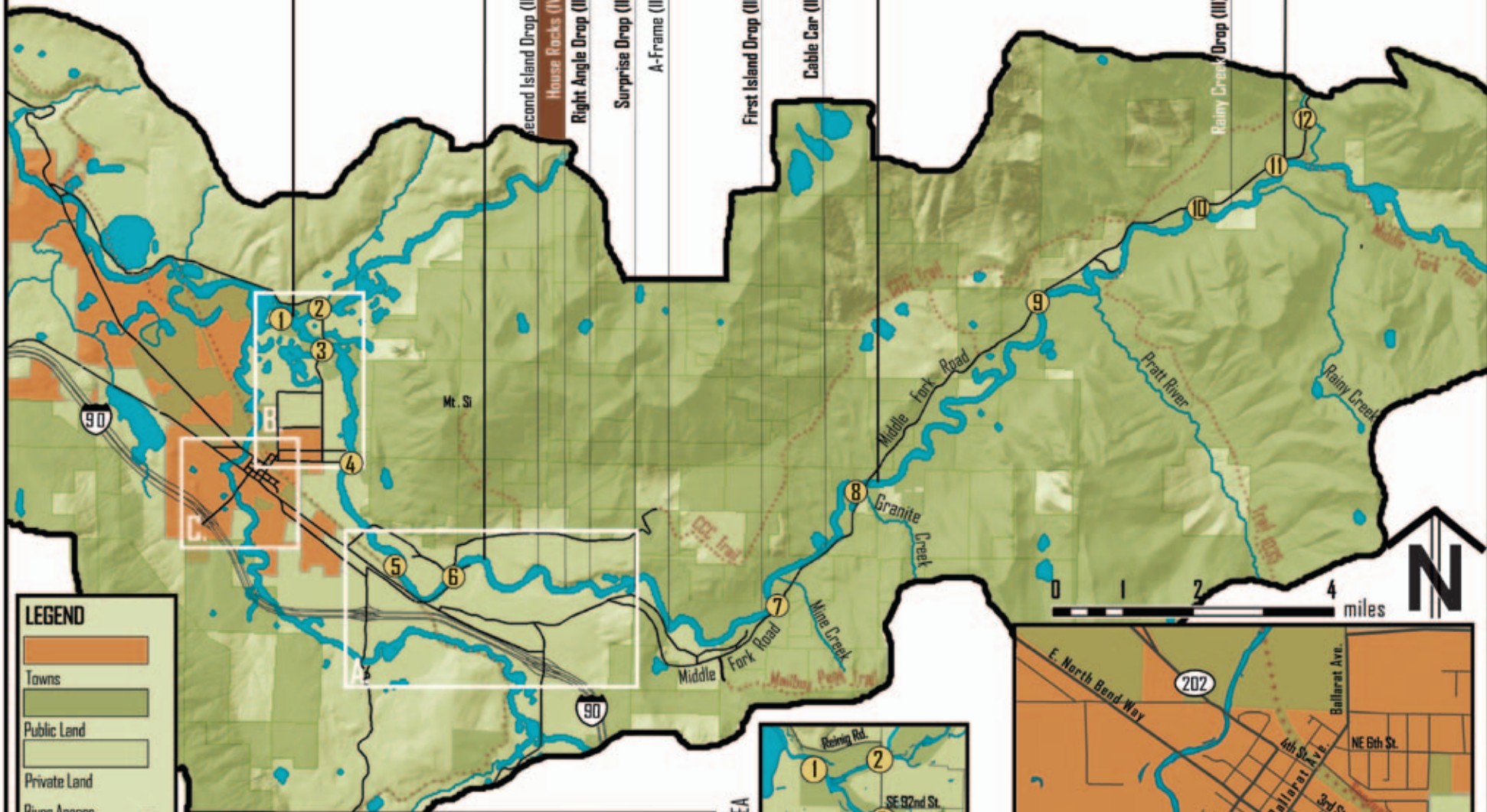
SNOQUALMIE MIDDLE FORK RIVER

Lower Middle Fork

Middle Middle Fork (III)

Upper Middle Fork (II - III)

Upper Upper Middle Fork



LEGEND

- Towns
- Public Land
- Private Land
- River Access
- Rivers/ Waterbodies
- Interstate Highway 90
- Interstate Exit Number 32
- State Highway 202
- Roads
- Trails





RIVER ACCESS

Access Points	Kayak/ Canoe	Raft	Parking	Restrooms	Day-use	Camping	Hiking
LOWER MIDDLE FORK							
1 Meadowbrook Bridge	●	●	□	○	○	○	●
2 Old School Site	●	○	□	○	○	○	□
3 Norman Bridge	●	●	□	○	○	○	○
4 Blue Hole	●	○	□	○	○	○	○
MIDDLE MIDDLE FORK							
5 *Tanner Landing	*●	*●	●	*●	*●	*□	*○
6 Tanner Road End	●	●	●	○	○	○	*●
7 Mine Creek	●	○	□	*●	●	○	●
8 Granite Creek Bridge	●	●	□	○	○	○	●
9 Russian Butte View	●	●	□	○	□	○	○
UPPER MIDDLE FORK							
10 Riverbend	●	○	□	○	●	○	○
11 Bridgeview	●	□	●	○	*●	○	○
12 Taylor River Bridge	●	○	●	○	○	*●	○
UPPER UPPER MIDDLE FORK	hikable	○	○	○	○	○	○

● - Available ○ - Not Available □ - Limited Availability * - Potential Availability

Day Use includes picnicking and fishing. Swimming is also available at the Old School Site, Blue Hole, Mine Creek, and Bridgeview.

SAFETY & ETIQUETTE TIPS

SAFETY

- **Boating skills.** You should be able to stop or reach shore before encountering danger. Do not enter a rapid unless you are sure you can run it safely.
- **Swimming skills.** Have competent swimming skills.
- **Wear a life jacket.** Life jacket should fit snugly.
- **Wear a helmet** that is solid and fits correctly.
- **Do not boat alone.** Recommended minimum parties include three people or two crafts.
- **Know the signs:**

1. **HIGH WATER.** Do not judge the river level at put in, as it can change with various river widths. Always use reliable gauge information. (available on americanwhitewater.org).

2. **COLD:** Dress appropriately for the cold water. Wear a wet or dry suit if the water is less than 50 degrees. Cold water submersion can rob take away strength and mental agility for making sound decisions on the water.

3. **RIVER OBSTACLES:** Know how to read the river and its obstacles including, strainers, dams, weirs, ledges, holes, hydraulics and hydraulics in order to avoid entrapment, pinning, and difficult rescues. To learn more, visit the "Safety Code of American Whitewater" at americanwhitewater.org

ETIQUETTE

- **Be respectful and helpful** towards others.
- **Be mindful of the time** you are spending putting in, taking out, and playing, especially if others are waiting.
- **Allow space upstream and downstream** between you and other paddlers in order to avoid collisions.
- **The upstream craft always has the right of way.**
- **Avoid occupied eddies when exiting the river.** Use caution when entering eddies that are occupied.
- **ALWAYS PROVIDE ASSISTANCE** to others who are in trouble.



Map prepared by



National Park Service:
Rivers, Trails, & Conservation
Assistance Program